

**SERVICE DRIVE  
WITH CURB AND GUTTER**

4-22-70

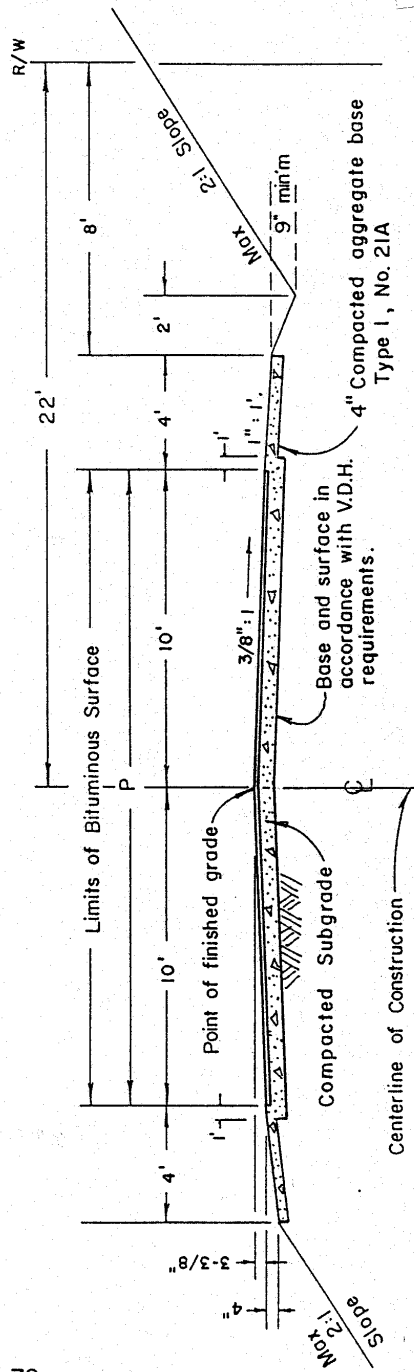
TS-14

REVISIONS	

**FAUQUIER COUNTY**

**TYPICAL SECTION  
WITH CURB AND GUTTER**

**SERVICE DRIVE**



**SERVICE DRIVE  
WITHOUT CURB AND GUTTER**

4-22-70

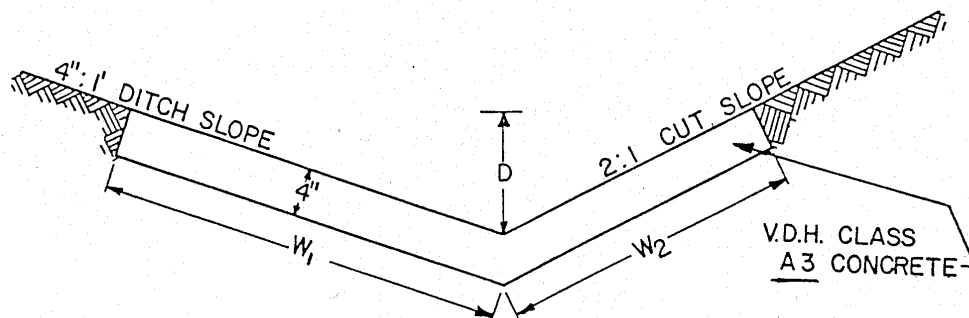
TS-15

REVISIONS	

FAUQUIER COUNTY

TYPICAL SECTION  
WITHOUT CURB AND GUTTER

SERVICE DRIVE



D=DEPTH (FROM PLANS)	6"	8"	9"	10"	12"
W <sub>1</sub>	1'-7"	2'-2"	2'-5"	2'-8"	3'-2"
W <sub>2</sub>	1'-2"	1'-6"	1'-8"	1'-11"	2'-3"

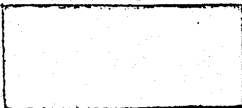
WHERE DITCH SLOPE OR CUT SLOPE VARIES FROM THAT AS SHOWN ABOVE, USE DIMENSIONS AS SHOWN ON SHEET NO.108.1 OF V.D.H. "ROAD DESIGNS AND STANDARDS", OR ADJUST ABOVE DIMENSIONS ACCORDINGLY TO FIT LOCAL CONDITIONS.

WHERE "VEE-DITCH" IS REQUIRED AT TOE OF FILLS, IN MEDIANS, OR LOCATIONS OTHER THAN AT ROAD SIDES USE W<sub>1</sub> = W<sub>2</sub> FOR THE SLOPE AND DEPTH OF DITCH AS REQUIRED ON PLANS. SEE V.D.H. STANDARD SHEET NO.108.1 FOR SLOPES OTHER THAN SHOWN ABOVE.

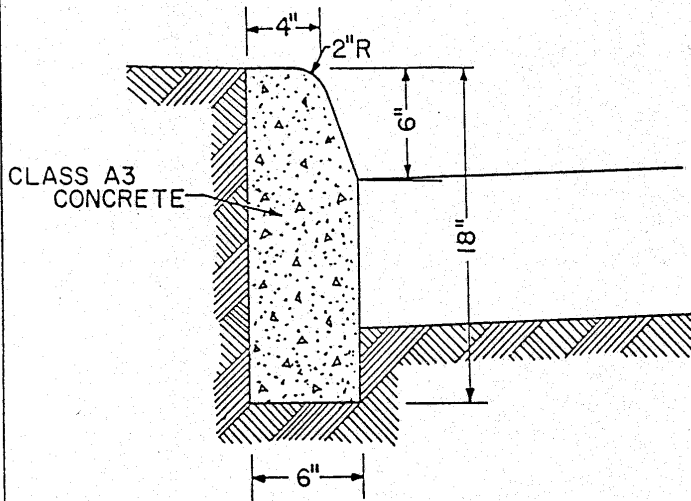
PD-1

REVISIONS	

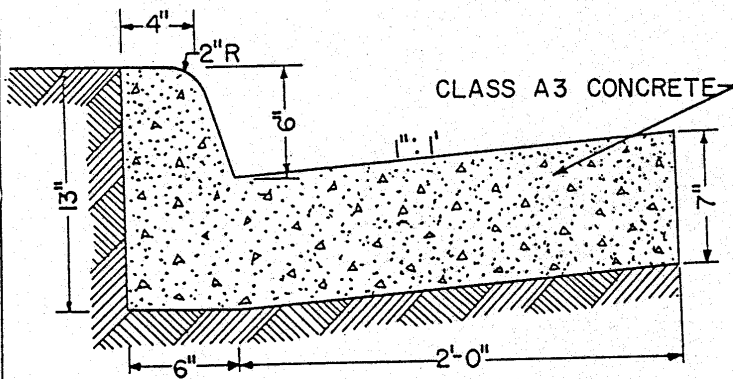
FAUQUET COUNTY



PAVED ROAD-  
-SIDE DITCH



HEADER CURB  
(V.D.H.)



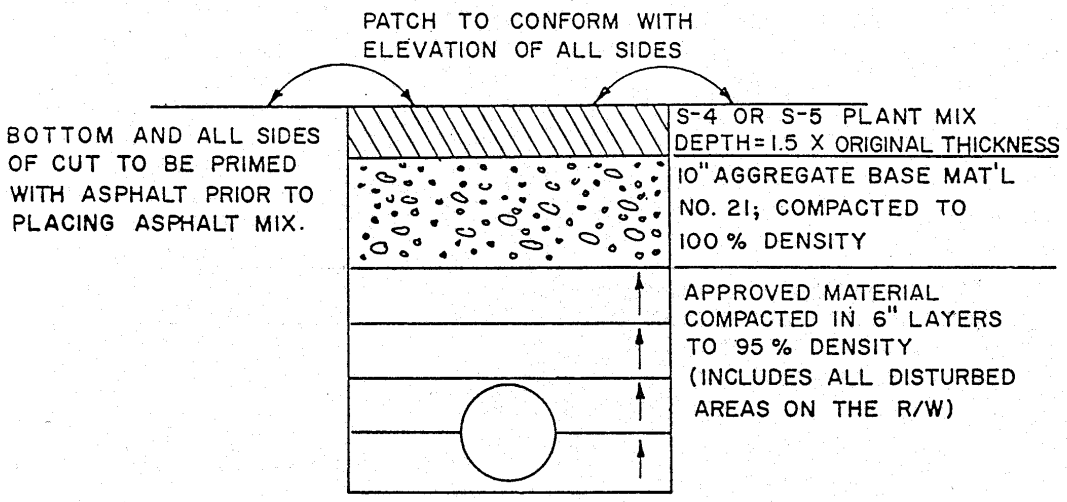
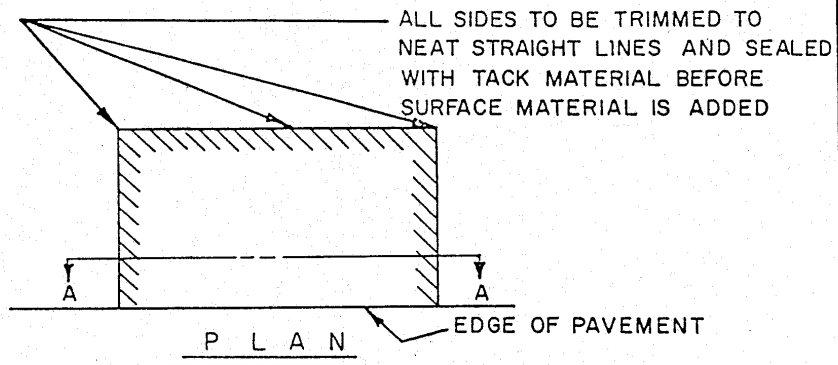
COMBINATION CURB AND GUTTER  
(V.D.H.)

NOTE: THESE STANDARDS CORRESPOND TO VIRGINIA DEPT OF HIGHWAYS STANDARD CG-2, STANDARD CURBING AND STANDARD CG-6, COMBINATION CURB AND GUTTER, AND SHALL BE USED ON ALL PROJECTS ALONG STATE PRIMARY HIGHWAYS IN LIEU OF COUNTY STANDARDS [REDACTED] OR WHERE DEEMED PROPER BY THE COUNTY [REDACTED] OF FAUQUIER,

CG-2 C-2

REVISIONS	FAUQUIER COUNTY	COMBINATION CURB AND GUTTER HEADER CURB (V.D.H. STANDARD)

315.00



SECTION A-A

NOTES

SHOULDER AND DITCH LINES TO BE REPLACED TO CONFORM WITH EXISTING SHOULDERS AND DITCHES. ADD CRUSHER RUN STONE TO SHOULDERS.

EACH PAVEMENT CUT SHALL BE COVERED WITH A TEMPORARY OR PERMANENT ASPHALT PATCH THE SAME DAY EXCAVATION IS MADE.

NO BITUMINOUS MATERIAL SHALL BE APPLIED EXCEPT WHEN THE ATMOSPHERIC TEMPERATURE IS ABOVE 50 DEGREES AND WHEN

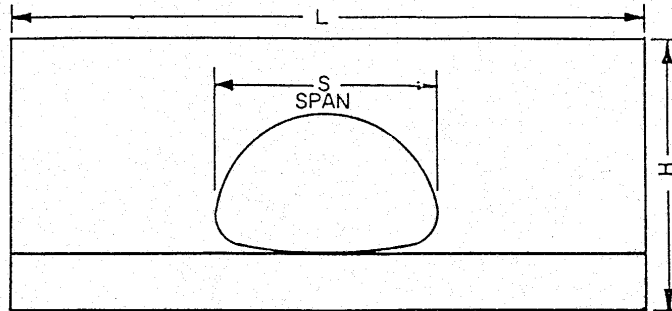
6-12-67 THE WEATHER IS NOT FOGGY OR DAMP.

SM-2

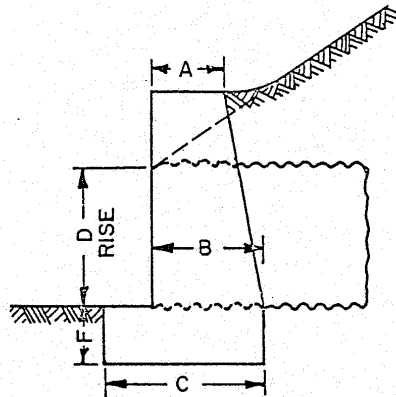
REVISIONS	

*FAUQUIER COUNTY*

METHOD FOR  
REPLACEMENT OF  
ROADWAY CUTS



FRONT ELEVATION



SIDE ELEVATION

NOTE: ON SHALLOW FILLS WHERE ENDWALLS ARE 1' OR LESS BELOW SHOULDER LINE, THE TOP OF THE ENDWALL SHALL BE CONSTRUCTED PARALLEL TO THE GRADE OF THE ROAD.

DIMENSIONS OF PIPE ARCH		DIMENSIONS FOR ONE SINGLE ENDWALL						CU. YDS. CLASS A3 CONCRETE FOR ONE ENDWALL
SPAN S	RISE D	A	B	C	F	H	L	
14"	9"	0'-6"	0'-11"	1'-4"	0'-6"	2-0	3-5	0.201
18	11	0-6	0-11	1-4	0-6	2-2	4-3	0.258
22	13	0-6	0-11	1-4	0-6	2-4	5-1	0.322
25	16	0-8	1-1/2	1-7	0-8	3-0	6-1	0.626
29	18	0-9	1-3	1-9	0-8	3-2	6-11	0.823
36	22	0-11	1-6	2-2	0-9	3-7	8-6	1.371
43	27	1-0	1-9	2-6	0-9	4-0	10-4	2.072
50	31	1-0	1-9	2-6	0-9	4-4	11-11	2.520
58	36	1-0	2-0	2-9	0-9	4-9	13-10	3.427

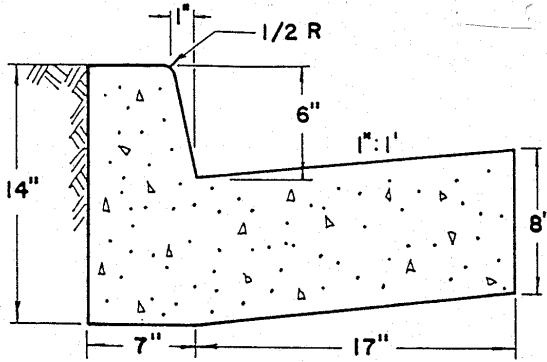
EW-5

REVISIONS	

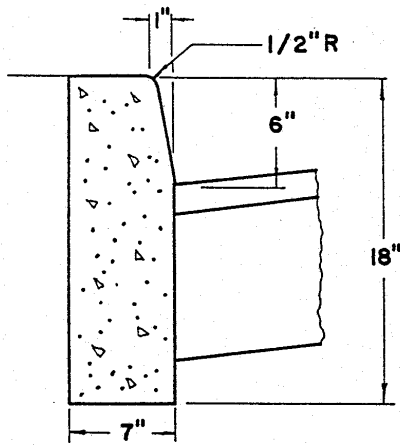
*FAUQUIER COUNTY*



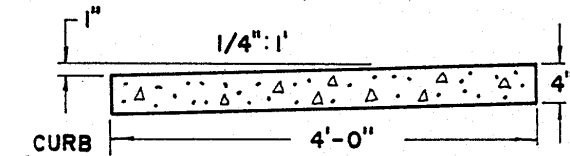
STANDARD ENDWALL  
FOR  
PIPE ARCHES



**COMBINATION CURB AND GUTTER (CG-1)**



**HEADER CURB (C-1)**



**SIDEWALK (SW-1)**

ALL CURB, GUTTER, AND  
SIDEWALK SHALL BE OF  
V.D.H. CLASS 'A' (AE) CONCRETE

GENERAL NOTES

CURB AND GUTTER CONSTRUCTION SHALL BE IN SECTIONS OF UNIFORM LENGTH APPROXIMATELY TEN (10) FEET, AND NO SECTION SHALL BE LESS THAN SIX (6) FEET IN LENGTH.

EXPANSION JOINTS SHALL BE PLACED IN HEADER CURB, COMBINATION CURB AND GUTTER, AND SIDEWALK EVERY FORTY (40) FEET. WHERE STATIONARY STRUCTURES SUCH AS DROP INLETS, MANHOLES, ETC. ARE WITHIN THE LIMITS OF THE CURB AND GUTTER, AND SIDEWALK, AN EXPANSION JOINT SHALL BE PLACED BETWEEN THE STRUCTURE AND THE CURB AND GUTTER AND SIDEWALK.

TRANSVERSE SCORING SHALL BE PROVIDED IN THE SIDEWALK EVERY FOUR (4) FEET AND SHALL EXTEND TO AT LEAST ONE-THIRD (1/3) OF THE DEPTH OF THE SLAB.

IN CONGESTED AREAS, OR WHEN DEEMED NECESSARY BY THE ENGINEER, SIDEWALK MAY BE REQUIRED TO BE FIVE (5) FEET IN WIDTH WITH TRAVERSE SCORING EVERY FIVE (5) FEET.

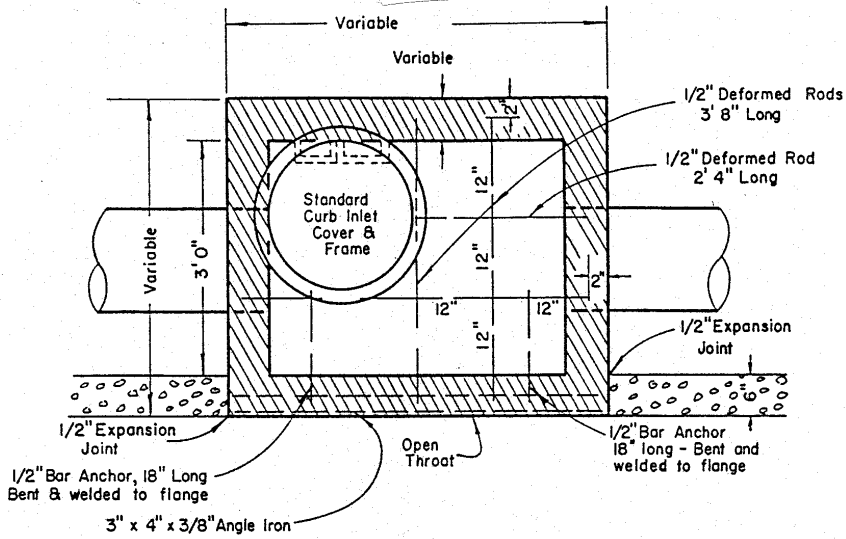
4-22-70

CG-1	C-1	SW-1
------	-----	------

REVISIONS	

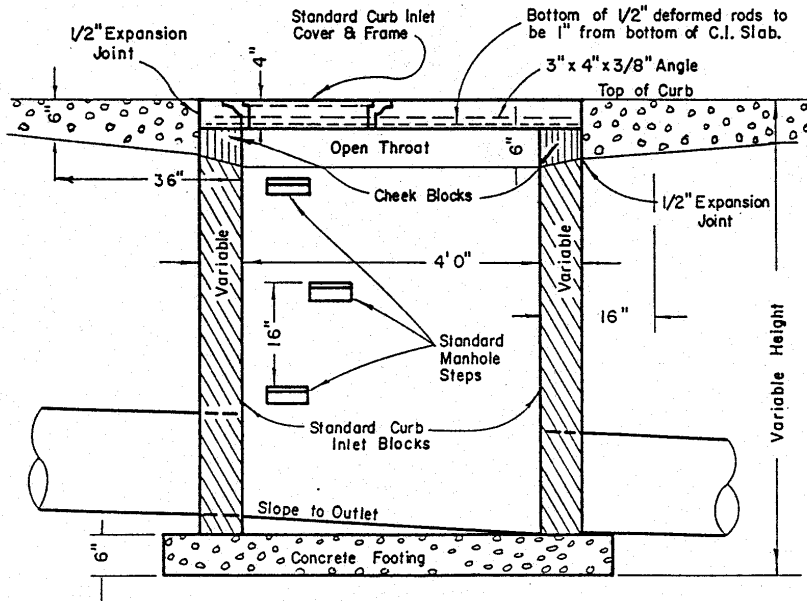
FAUQUIER COUNTY

COMBINATION CURB AND  
GUTTER — HEADER CURB  
SIDEWALK



PLAN

See note on sheet 21 for step and anchor bar detail.



SECTION ON CURB LINE

4-22-70

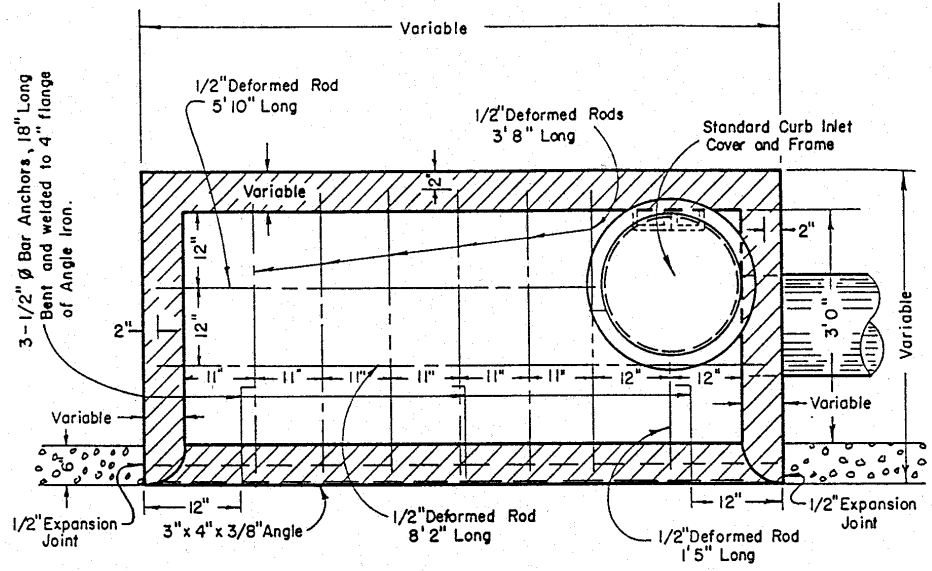
CI-1

REVISIONS	

FAUQUIER COUNTY

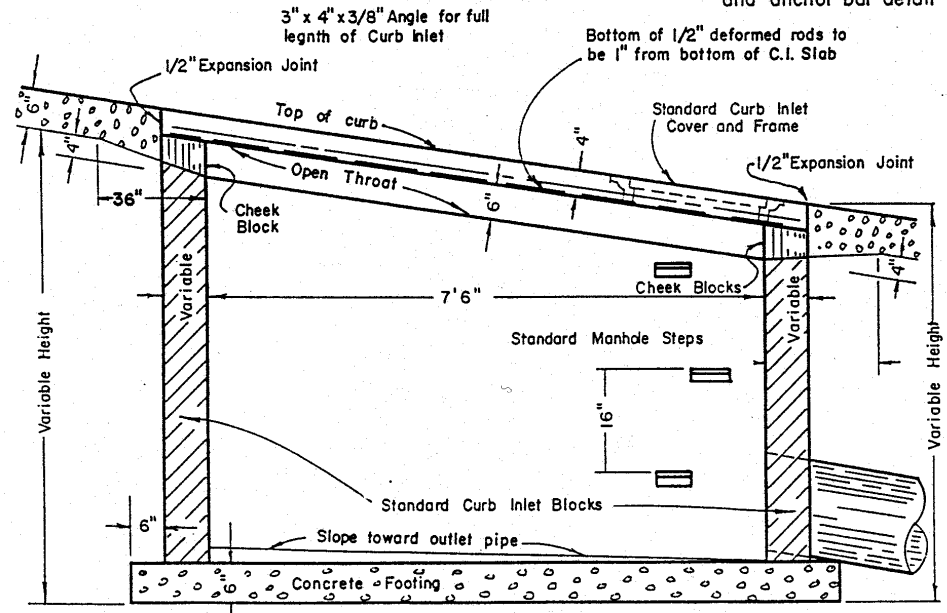
STANDARD CURB INLET  
CI-1





PLAN

See note on sheet 21 for step and anchor bar detail



SECTION ON CURB LINE

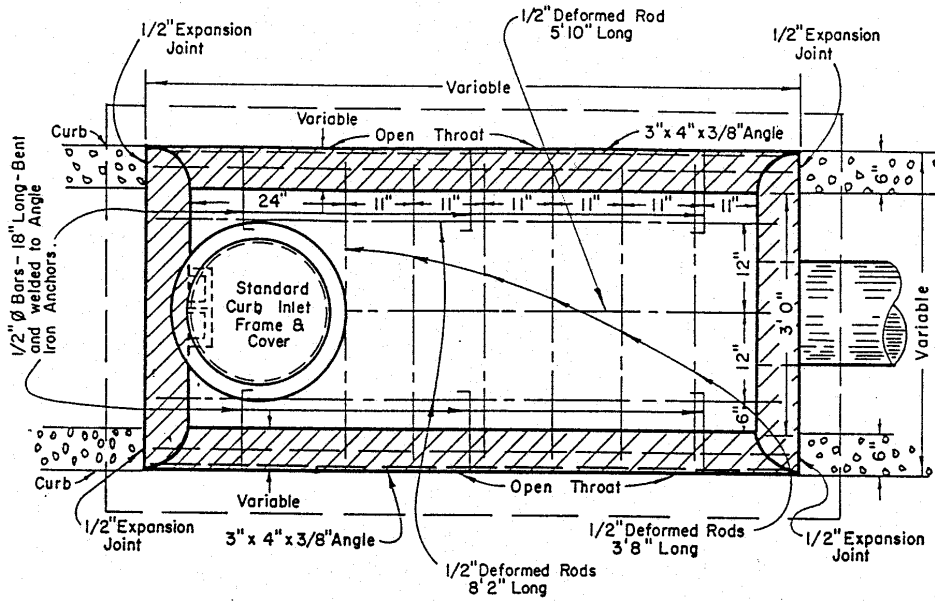
4-22-70

CI-2

REVISIONS	

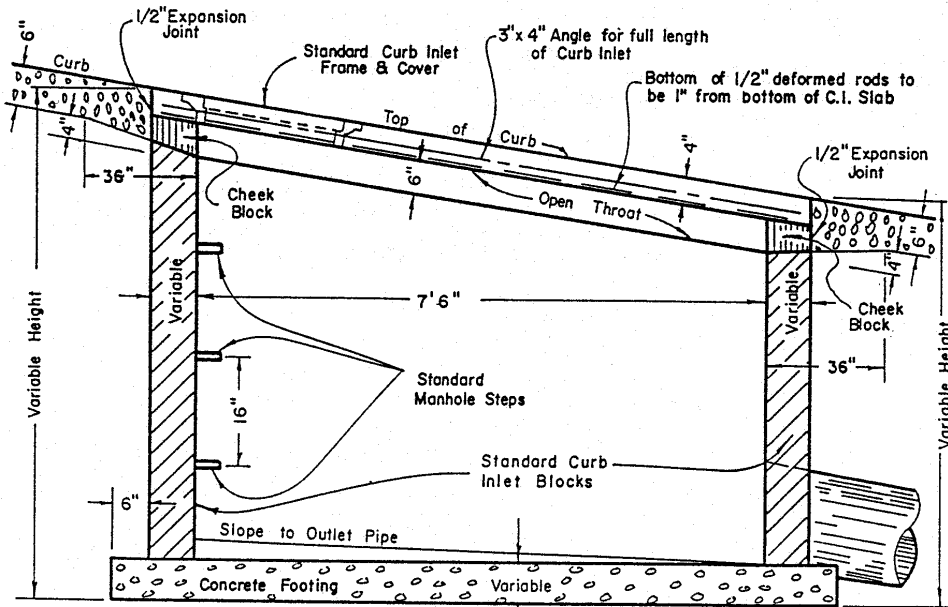
FAUQUIER COUNTY

STANDARD CURB INLET  
CI-2



PLAN

See note on sheet 21 for step and anchor bar detail.

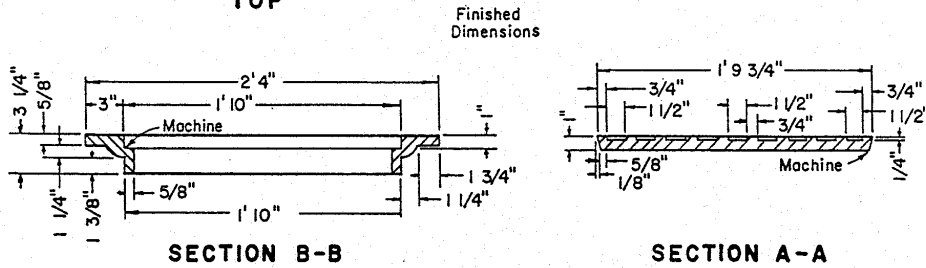
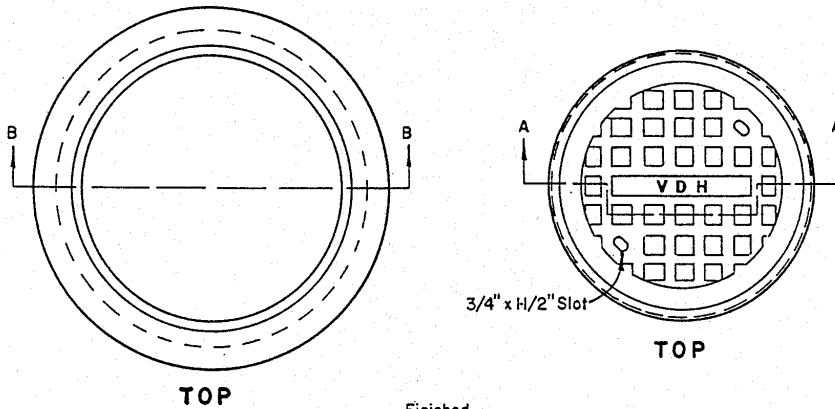


SECTION ON CURB LINE

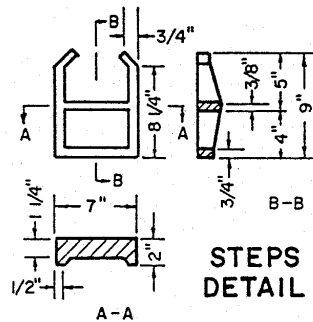
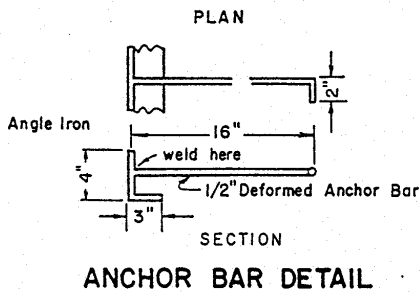
4-22-70

CI-3

REVISIONS		FAUQUIER COUNTY	STANDARD CURB INLET CI-3



**STANDARD CURB INLET  
FRAME & COVER**



The letters V.D.H. are to be cast in the depression in top of cover 1" wide and raised 1/4" high as shown.  
Manhole steps to be made of same quality grey cast iron as frame and covers.  
Castings shall conform to Section 230.02 of the current Virginia Dept. of Highways Road and Bridge Specifications.

Cast Iron

4-22-70

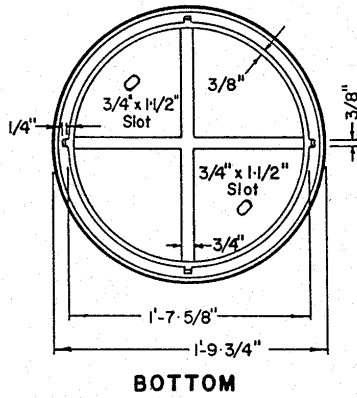
Frame 120 lbs. Cover 100 lbs.

IFC-1

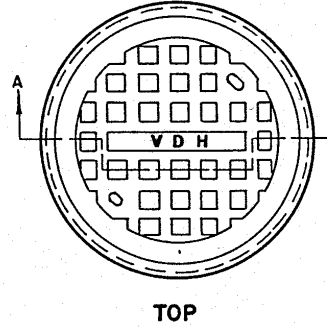
REVISIONS	

FAUQUIER COUNTY

STANDARD CURB INLET  
FRAME & COVER  
ANCHOR BAR & STEPS DETAIL

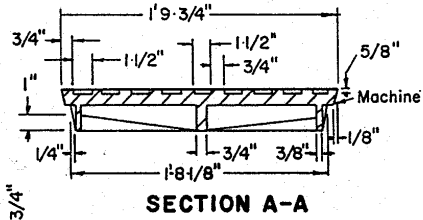


**BOTTOM**

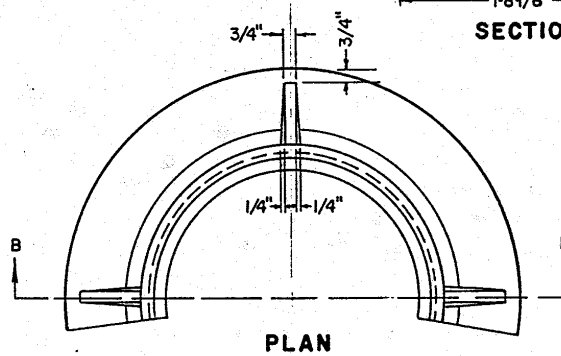


**TOP**

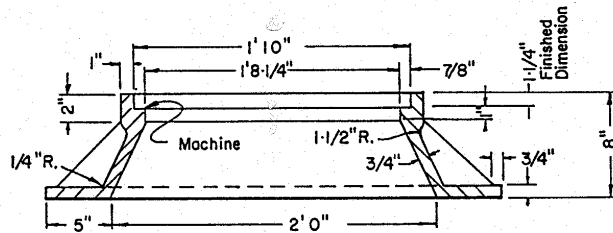
The letters V.D.H. are to be cast in the depression in top of cover 1" wide and raised 3/8" high as shown.  
 Frame and cover to be made of cast iron. Frame weight 225 lbs.  
 Cover weight 125 lbs. Castings shall conform to Section 230.02 of the current Virginia Dept. of Highways Road and Bridge Specifications.



**SECTION A-A**



**PLAN**



**SECTION B-B**

4-22-70

MFC-1

REVISIONS	

**FAUQUIER COUNTY**

**STANDARD MANHOLE  
FRAME & COVER**